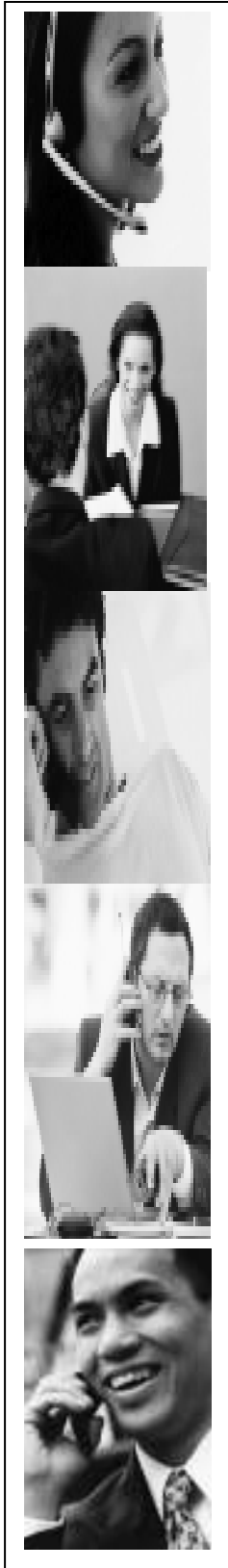




## A Managed Oracle Critical Updates Deployment Service



*Ensuring the confidentiality, integrity and security of your company's information is not only imperative to running an efficient, successful organisation but is increasingly becoming a legal requirement. To maintain the security of your database, Oracle regularly release security fixes known as Critical Patch Updates. It is essential that the application of these patches is carried out in a structured, timely and efficient manner. In response to customer demand Core have developed CoreCU. CoreCU will undertake the planning, scheduling and application of your Critical Patch Updates enabling your organisation to rest assured in the knowledge that your database is maintained at the highest levels of security possible at all times.*

### **CoreCU Overview**

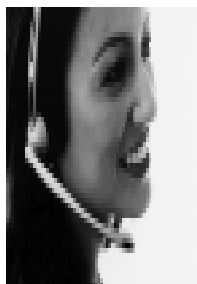
**Core International** will provide a complete Critical Update implementation and management service ensuring that patches are applied in a strategic manner, securely, on time and in accordance with Oracles documented best practices for implementing Critical Patch Updates. **Core** has developed an implementation methodology and approach to managed Oracle Critical Patch Updates that will ensure a successful and secure service.

### **Legal Compliance**

Ensure that you are meeting your legally required responsibilities by securing your company's most sensitive possession – your information. With the recent introduction of Sarbanes Oxley regulations, designed to enforce corporate accountability and responsibility, the onus to secure and protect your company's information is placed squarely on the shoulders of your organisation and is no longer a choice but is a legal requirement.

### **Oracle Knowledge Repository For Your Organisation**

**Core International** have been Oracle Database Administration experts for more than 10 years and have hundreds of man years experience providing Oracle Database Administration Services to our clients. **CoreCU** ensures that the highest levels of support and expertise are always available to your organisation.



## On Release of Critical Patch Update

- **CoreCU** conducts an analysis of the security vulnerability addressed by the individual Critical Patch Update.
- The Patch is applied on a server which is running the version of Oracle RDBMS that your organisation has applied at the time.
- The Patch is tested for integration with the version of the Oracle RDBMS as well as the individual **Core** application(s) on site in your organisation.
- Only when the patch has been fully tested will it be made available for release to your organisation.
- All patch application is scheduled with the client to avoid disruption to your business as much as possible.

## Benefits of *Core-CU*

- Guaranteed application of Critical Patch Updates within a specified time frame from publication.
- Implementation of a pre-tested, assured patch confirming compatibility with previous fixes and **Core** modules in place.
- Planned Configuration Management: eliminating surprise patch notifications requiring your organisation to apply the patch under duress, or unpredictable schedules.
- Avoid "Blackout Dates": avoid dates during which organisations will not be available such as end of quarter, times when books are being closed etc.
- Lower aggregate costs in applying patches: One high quality patch that fixes multiple high priority items and is well integrated and well tested is applied rather than a number of one off patches that may cause conflicts or repeated testing.

*If you require more information on Core-CU, please contact:*

Niamh Murphy  
Core International  
Tel: +353 21 4947400  
Fax: +353 21 4947432  
Email: [niamh.murphy@cork.core-com.ie](mailto:niamh.murphy@cork.core-com.ie)  
Web: [www.corehr.com](http://www.corehr.com)

