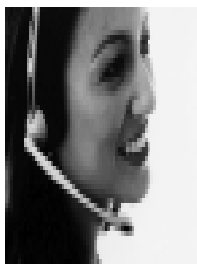




THE ADELAIDE & MEATH
HOSPITAL, DUBLIN
INCORPORATING
THE NATIONAL CHILDREN'S HOSPITAL

Adelaide & Meath Hospital Select CoreRoster



Adelaide & Meath Hospital, known locally as Tallaght Hospital, have selected the **CoreRoster** solution to cater for their comprehensive staff rostering and scheduling requirements.

The Adelaide & Meath Hospital, Dublin Incorporating the National Children's Hospital is a public, voluntary, university teaching hospital which opened in June 1998. The hospital represents the largest capital investment in healthcare ever undertaken by the state and comprises 2,408 rooms spread over its 35 acre site.

Adelaide & Meath Hospital choose to utilise the unique health sector functionality incorporated in **Core's** Health Care edition of **CoreRoster**. The hospital has over 3,000 employees with varying levels of expertise and diverse working patterns. Rostering these employees manually was monopolising supervisor's time and created rosters which did not capitalise on staff expertise to the full. The hospital will utilise **CoreRoster's** extensive features to -

- Allow supervisors to create optimal rosters in a fraction of the current time taken
- Assist in planning Annual Leave, Sick Leave, Time in Lieu & Recruitment
- Provide Management with instant access to reports and absence trends
- Cater for a diverse range of flexible shift patterns and rosters
- Allow for recording of overtime with direct link to payroll
- Monitor compliance with EU Working Time legislation
- Provide a real-time, hospital wide view of staff on duty and the skills available within the workforce.



Core is a leading supplier of integrated e-business solutions including HR, Payroll, Time and Attendance, Access Control and Employee Self Service to all major sectors of public and private business.

For further information, please contact:-

Niamh Murphy
Core International
Core House
Westpoint Business Park
Ballincollig
Cork
Tel: 021 4947400

Or visit our website at: www.corehr.com